



neek decals are incredibly easy to use and as long as instructions are followed, can be removed without leaving a trace. Visit: [www.neek.co](http://www.neek.co) to find out more!

## HOW TO:

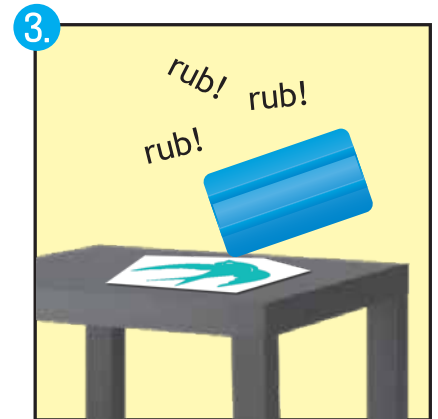
Like applying letraset or fake tattoos... Application is as easy as 1, 2, 3 (...4, 5, 6!)



Thoroughly dust, clean and dry the surface you'll be applying your new decal to.



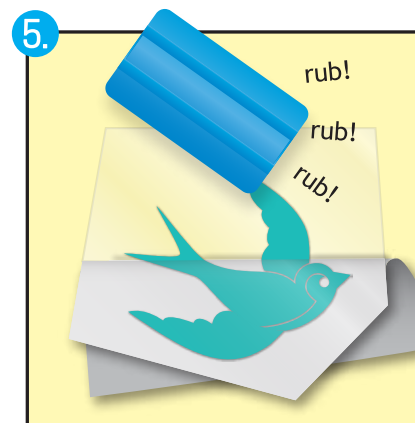
Trim around the design or separate big pieces to make applying easier.



Lay flat on a table & gently rub over the design (clear plastic side up) with the applicator tool or an old credit card.



Lift the decal up and peel back about a 1" strip of the backing paper along the top and stick to the surface, positioning the decal into place.



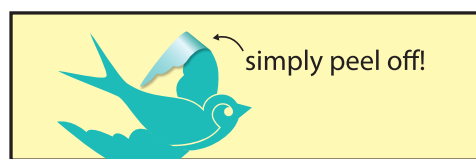
Slowly pull the backing paper downwards and peel away, while gently rubbing over the design with the tool to stick the decal & the clear plastic to the surface.



If at any point the decal doesn't stick to the surface just go back over with the applicator.

Wait at least 10 mins then gently peel off the clear plastic, rubbing the design if it starts to lift. Ta da!

## And to remove...



any questions?



...drop us an email at [help@neek.co](mailto:help@neek.co)

we'd be happy to offer advice!